



REF #	DESCRIPTION
-------	-------------

### RealSeal Kits

972-2100	<b>Intro Kit</b> .04 Taper #15 – #40 (20/per size) .06 Taper #15 – #40 (20/per size) Root Canal Sealant (with 12 mixers) 3 ml Thinning Resin 6 ml Primer Mixing Wells (25) Applicator Brushes (25)
972-2102	<b>.02 Taper Kit</b> .02 Taper #15 – #40 (20/per size) Accessory Points (20/per size) Root Canal Sealant (with 12 mixers) 3 ml Thinning Resin 6 ml Primer Mixing Wells (25) Applicator Brushes (25)
972-2103	<b>.04 Taper Kit</b> .04 Taper #15 – #40 (20/per size) Accessory Points (20/per size) Root Canal Sealant (with 12 mixers) 3 ml Thinning Resin 6 ml Primer Mixing Wells (25) Applicator Brushes (25)
972-2104	<b>.06 Taper Kit</b> .06 Taper #15 – #40 (20/per size) Accessory Points (20/per size) Root Canal Sealant (with 12 mixers) 3 ml Thinning Resin 6 ml Primer Mixing Wells (25) Applicator Brushes (25)

### RealSeal Refills

972-2004	Pellets (pk 100)
972-2010	Root Canal Sealant (with 12 mixers)
<b>972-2012</b>	<b>Self-Etch Root Canal Sealant</b>
972-2006	3 ml Thinning Resin
972-2007	6 ml Primer
972-2008	Mixing Wells (25)
972-2009	Applicator Brushes (25)

### Accessory Points (box of 100)

972-2301	XF (X-Fine)
972-2302	FF (Fine-Fine)
972-2303	MF (Medium-Fine)
972-2304	F (Fine)
972-2305	FM (Fine-Medium)
972-2306	M (Medium)
972-2307	L (Large)
972-2310	Assorted (XF-FF-MF-F-FM-M) Box of 120

REF #	DESCRIPTION
-------	-------------

### Autofit Points (box of 50)

972-2311	.04 Taper
972-2312	.06 Taper
972-2313	.08 Taper
972-2314	.10 Taper
972-2315	.12L Taper (1.35 mm dia)
972-2316	.12S Taper
972-2320	Assorted Pack Taper (.06 – .12 Taper)

### .02 Taper Points (box of 100)

972-2220	Size #20
972-2225	Size #25
972-2230	Size #30
972-2235	Size #35
972-2240	Size #40
972-2245	Size #45
972-2250	Size #50
972-2255	Size #55
972-2260	Size #60
972-2270	Size #70
972-2280	Size #80
972-2201	Assorted Sizes #15 – #40 (box of 120)
972-2202	Assorted Sizes #45 – #80 (box of 120)
972-2203	Assorted Sizes #90 – #140 (box of 120)

### .04 Taper Points (box of 50)

972-2420	Size #20
972-2425	Size #25
972-2430	Size #30
972-2435	Size #35
972-2440	Size #40
972-2445	Size #45
972-2401	Assorted Sizes #15 – #40 (box of 120)

### .06 Taper Points (box of 50)

972-2620	Size #20
972-2625	Size #25
972-2630	Size #30
972-2635	Size #35
972-2640	Size #40
972-2645	Size #45
972-2601	Assorted Sizes #15 – #40 (box of 120)

### Autofit Backfill Points (box of 60)

972-2321	F (Fine)
972-2322	FM (Fine-Medium)
972-2323	M (Medium)
972-2324	ML (Medium-Large)

Real Safety  
Real Strength  
Real Proof

*NOW WITH A **NEW**  
SELF-ETCH SEALER*



**RealSeal**<sup>TM</sup>



**SybronEndo**  
Sybron Dental Specialties

The future of bonded obturation is here. At last – an endodontic filling material

with the familiar handling of gutta percha *and* the added vital benefits of a superior seal.

And introducing RealSeal SE.

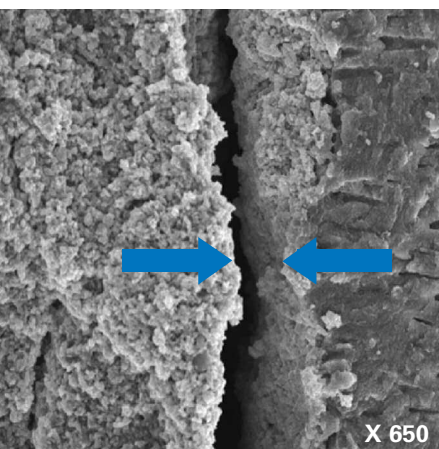


Why do we call it RealSeal? Because it is the endodontic filling material that provides a REAL seal. And Resilon™, the primary component of RealSeal, has also been proven to be biocompatible, nontoxic and nonmutagenic.<sup>1</sup> RealSeal is:

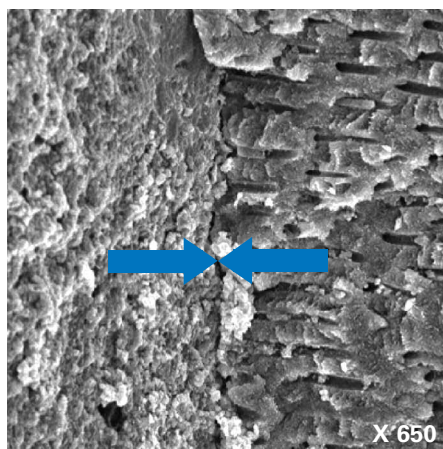
- **Leak-Resistant.** Unlike gutta percha, RealSeal leaves no gap for leakage. Coronal and apical leakage are substantially reduced.
- **Strengthening.** Gives the root significant toughness.
- **Self Etch.** Eliminates the priming step, simplifying the sealing technique.
- **Technique-Compatible.** Works with your current filling method.
- **Retreatable.** With chloroform and/or heat. Like Grossman's formula, retreatments are easy.
- **Radiopaque.** Just like your current method of obturation, detection is not a problem.

<sup>1</sup>Loma Linda University Biocompatibility and Toxicology Research Laboratory, Evaluation of Cytotoxicity of Resilon™ and its Extracts Using the Agar Diffusion Method. Conclusion: Resilon™ is not cytotoxic using the agar diffusion method.

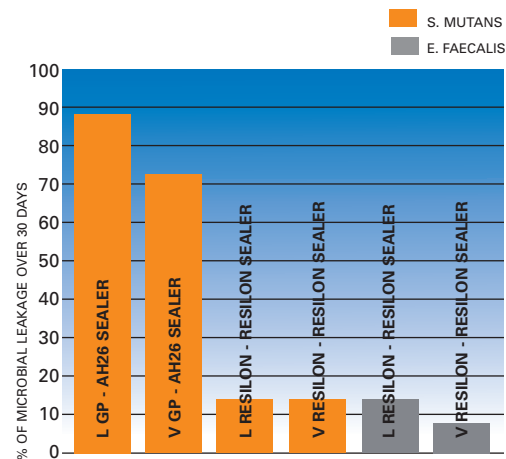
### A SUPERIOR SEAL DRAMATICALLY REDUCES LEAKAGE



Traditional gutta percha shows fissures and gaps between its surface and the dentin – just the place for harmful bacteria to multiply.

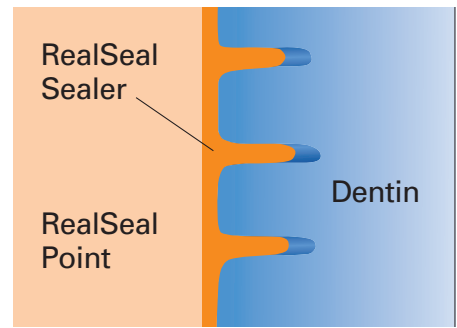
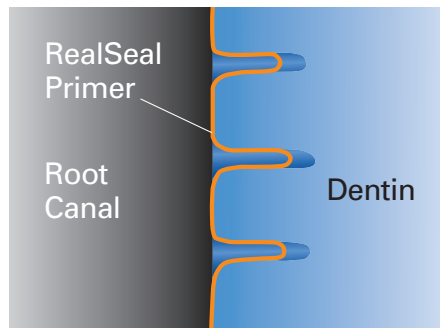
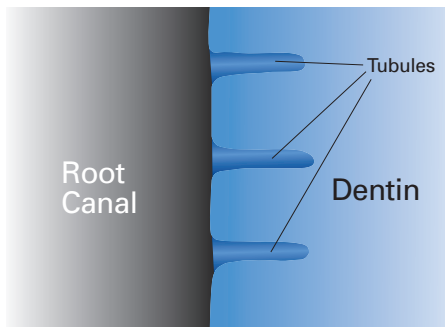


RealSeal (Resilon™) fills seamlessly and smoothly, eliminating leakage.



Proven leak-resistance.

Source: G. Shipper, D. Orstavik, F.B. Teixeira, and M. Trope. Journal of Endodontics (in press).



### HOW REALSEAL WORKS

Based on polymers of polyester, RealSeal contains bioactive glass,  $\text{Ca(OH)}_2$ , and radiopaque filler. The RealSeal filling material forms what is called a "mono-block" between the canal wall, sealer, and RealSeal cone. This is what gives you a seamless seal and true root strengthening.

### NO LEARNING CURVE

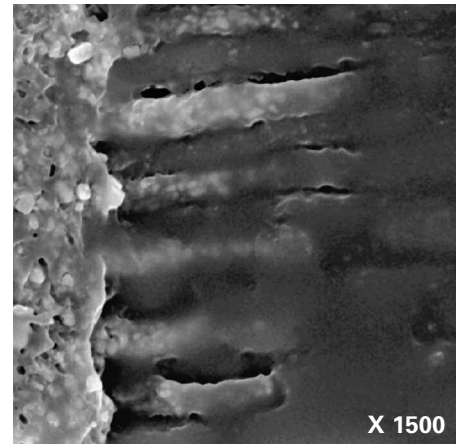
The RealSeal endodontic obturation system now offers an additional choice of resin-based sealers – RealSeal SE™ self-etch sealer. This new self-etch sealer eliminates the priming step without hindering the sealer's performance.

RealSeal SE provides all the benefits of the original RealSeal resin sealer and gives just as superior a seal. And when switching from gutta percha to the RealSeal SE system, there's absolutely no change in technique needed.



RealSeal is the real deal! It strengthens the root, seals the canal system and is simple to use. The protocol allows me to incorporate my current obturation technique. The core and sealer "marry" together with the canal walls to provide a true chemical bond.

– Gary Glassman DDS, FRCD(C)  
Toronto, ON, Canada



RealSeal resin tags. No other sealer can offer this kind of bonding.

### Proven Strengthening

GROUPS	MEAN
Control/No Obturation	465.39
Lateral Gutta Percha	391.51
Vertical Gutta Percha	392.37
Lateral Resilon™	504.22
Vertical Resilon™	498.23

Source: F.B. Teixeira, E.C. Teixeira, J.Y. Thompson, and M. Trope. IADR/AADR/CADR 82nd General Session, March 10-13, 2004.

